



FOR A BETTER TOMORROW

Insulation for Timber and Metal Frame Wall Systems

FRAMETEC
FRAMETEC SLAB
HOMETEC ROLL



Your insulation partner for a better future

Our mission as a European insulation supplier is clear: to have a lasting positive impact on people, society and the environment.

At URSA, we offer our customers flexible and efficient insulation solutions that enable them to achieve their ambitions. Our long-term strategic relationships are collaborations that make a difference for future generations.

Reliable and committed.

Pragmatic and goal-oriented.

Accessible and flexible.

These core values are embodied in everything we do at URSA, which is part of the insulation division of the Etex Group. From new product development to technical support and after-sales service.

We strive to make a lasting difference... for our customers, society and the planet. How?

- By developing innovative and efficient solutions tailored to our customers' specific needs.
- By forging reliable long-term relationships with all partners in our network, from suppliers to end customers.
- And continuously focusing on steadfast quality, high responsiveness and personalised service.

Reliable and committed

Reliable long-term relationships

Pragmatic and goal-oriented

Innovative and efficient solutions
Consistent quality

Accessible and flexible.

High responsiveness and personalised service

A glocal player

At URSA, we start with global strategies and services and tailor them to the needs and requirements of the local market. That makes us a truly glocal player. In this way, we are close to our customers and together seek innovative ways to strengthen their business. We always work based on mutual trust and take a transparent, individual approach. We support our customers in achieving their business and environmental goals by focusing on steadfast, strategic partnerships.

URSA has over 11 production sites that satisfy the demand for high-quality products in 25 countries. The site in Desselgem (Belgium) is a model for new glass mineral wool production technology. Our site in Saint-Avoid (France) produces glass mineral wool and extruded polystyrene. Both sites supply certified quality products to the Benelux, French and UK market.

-  **Head office**
Madrid
-  **Production site**
XPS
-  **BRANCH**
-  **PRODUCTION SITE**
GLASS MINERAL WOOL



URSA FRAMETEC & FRAMETEC SLAB and URSA HOMETEC ROLL

URSA FRAMETEC is a lightweight, non-combustible, glass mineral wool product. It is suitable for use in both timber and metal framed walls. **URSA FRAMETEC** has a thermal conductivity of 0.032 W/mK or 0.035 W/mK.

URSA FRAMETEC SLAB 32 is a lightweight, non-combustible, semi-rigid glass mineral wool slab for use in timber framed walls. It has a thermal conductivity of 0.032 W/mK.

URSA FRAMETEC SLAB 35 is a lightweight, non-combustible, semi-rigid glass mineral wool slab. The 600mm width makes it suitable for use within light steel framed walls. It has a thermal conductivity of 0.035 W/mK.



User friendly

Our new generation URSA TERRA mineral wool has a 'soft touch' feel making it easier to handle and install whilst still maintaining its excellent mechanical properties.

Global warming potential

URSA FRAMETEC and **URSA HOMETEC ROLL** do not use chemical blowing agents and so the Global Warming Potential (GWP) arising from them is zero.

Insulation savings

Used between studs in timber frame construction it is possible to meet the Building Regulation requirement with only 140mm of **URSA FRAMETEC** or **FRAMETEC SLAB**.

Acoustic

URSA FRAMETEC and **URSA HOMETEC ROLL** have excellent sound insulation characteristics and enhance the acoustic comfort of the building.

Environment

URSA mineral wool is manufactured from an abundant, sustainable resource and utilises up to 73% glass waste.

Reduced risk of condensation

Walls fitted with **URSA FRAMETEC** and **URSA HOMETEC ROLL** create more even warm conditions so reducing the risk of surface condensation.

A vapour control layer is required when insulating between the studs.

Handling

URSA FRAMETEC and **URSA HOMETEC ROLL** are lightweight yet tough, resilient and easy to install. They are easily cut using a sharp knife.

Space saving

Compaction of the rolls in their manufacture saves space in both storage and transport.

Durability

URSA FRAMETEC and **URSA HOMETEC ROLL** are rot-proof, durable and maintenance free. They are non-hygroscopic and will not slump in normal use.

All of our products carry both the UKCA and CE Mark to show compliance with BS EN 13162 and are quality assured to ISO 9001.



Benefits

Wider choice

URSA FRAMETEC and **URSA HOMETEC ROLL** will assist in meeting the appropriate Building Regulation standard with any form of timber or metal framed wall construction.

Quality

Outstanding product quality manufactured to ISO 9001 Quality Systems.

Design

Construction Principles

There are three main forms of framed construction depending upon the position of the insulation:

- **Cold Frame** – all of the insulation is fitted within the depth of the studs which results in the timber/steel bridging the insulation. It is possible to add an insulated lining internally to both improve the thermal performance and mask the thermal bridge effect (see Figure 1).
- **Warm Frame** – the insulation is fitted externally to the framing, as a sheathing, to give a continuously insulated envelope. This form of construction has the advantages of preventing the thermal bridge problem and being inherently safe from harmful condensation risk (see Figure 2).
- **Hybrid** – insulation is fitted between the studs with an additional layer on the outside to reduce thermal bridging. Careful choice of the ratio of thermal resistances of each layer is required to avoid interstitial condensation (see Figure 3).

Limiting Air Infiltration

Ensure that the **URSA FRAMETEC** or **URSA HOMETEC ROLL** is continuous and forms a tight joint at details such as corners. Where a timber floor meets the wall it is important to limit air infiltration by sealing around the perimeter of the floor. Expanding foam and/or mastic type sealants should be used under the sole plate to seal the floor edge. The polythene air and vapour control layer (AVCL) creates an additional air infiltration barrier.

Wall Width

The use of high efficiency insulation has the benefit of achieving high standards of insulation without a great increase in the overall wall thickness. Standard 140mm deep timber studs may be used whilst still achieving the current Building Regulation standard.

Condensation

An air and vapour control layer (AVCL) is generally required when insulating between the studs, this can either be a polythene sheet (minimum 500g) or a foil-backed plasterboard. When using sheathing insulation the structural frame is maintained at the same temperature as the inside of the building and an air and vapour control layer (AVCL) may not be required. Surface condensation is generally not a problem with the correct choice of insulation thickness, heating system and ventilation.

Rainwater Penetration

Projections and discontinuities within the cavity such as changes in wall thickness or beams will require the use of a cavity tray. When using sheathing insulation in conjunction with a cold pitched roof (insulation at horizontal ceiling level) the top edge of the insulation should be protected by the use of a cavity tray.

Figure 1 – Cold Frame Construction

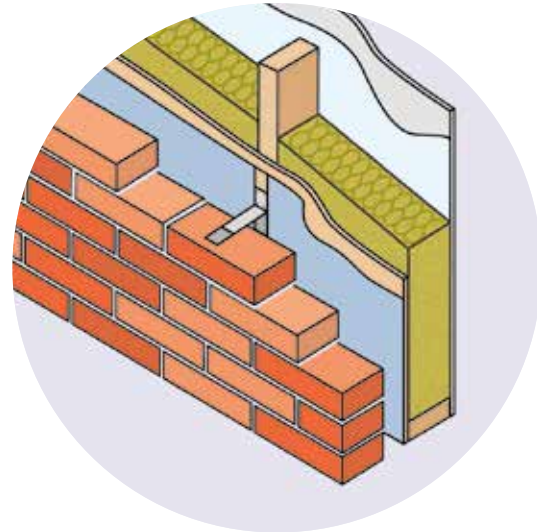


Figure 2 – Warm Frame Construction

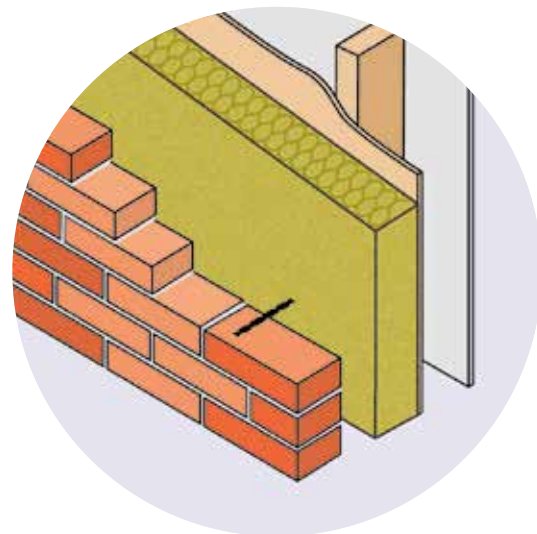
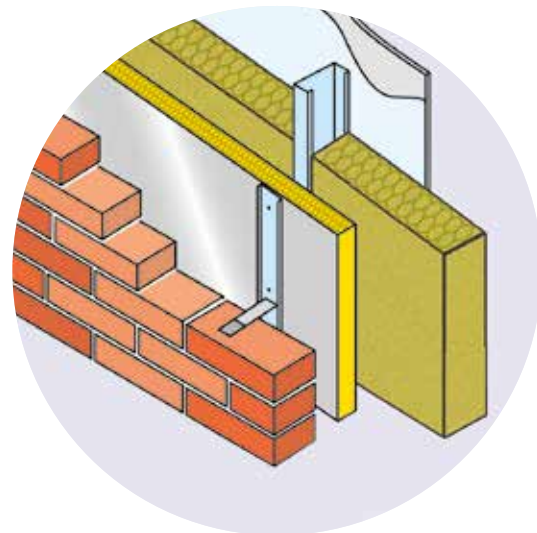


Figure 3 – Hybrid Construction



Thermal Bridging

Insulation installed between studs will introduce a series of repeating thermal bridges plus the effect of lintels, noggins and sole and top plates.

This can significantly affect the calculated U-value as the framing may account for up to 20% of the wall area; the Building Regulations recommend a default of 15% framed area for calculation purposes.

The use of an insulated sheathing is more thermally efficient as it eliminates these causes of thermal bridging.

With increasing levels of insulation it is vitally important to ensure continuity of the insulation at the junction of elements and around door and window openings.

At the junction of the floor and the wall a vertical section of insulation, at the floor edge, or extending the sheathing insulation below the floor level, can reduce thermal bridging (See Figures 4, 5, 6 & 7).

Figure 4 – Wall/Floor Junction Insulation Below Slab

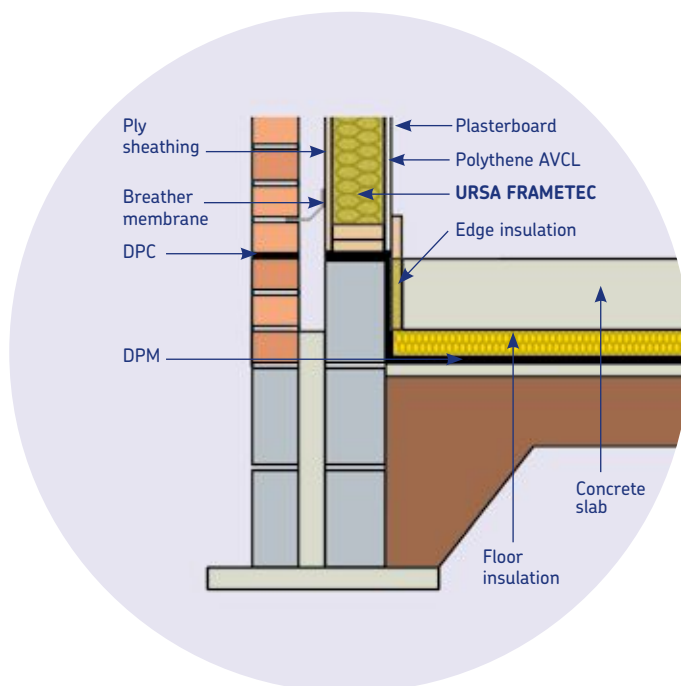


Figure 5 – Wall/Floor Junction Insulation Above Slab (Timber Floor)

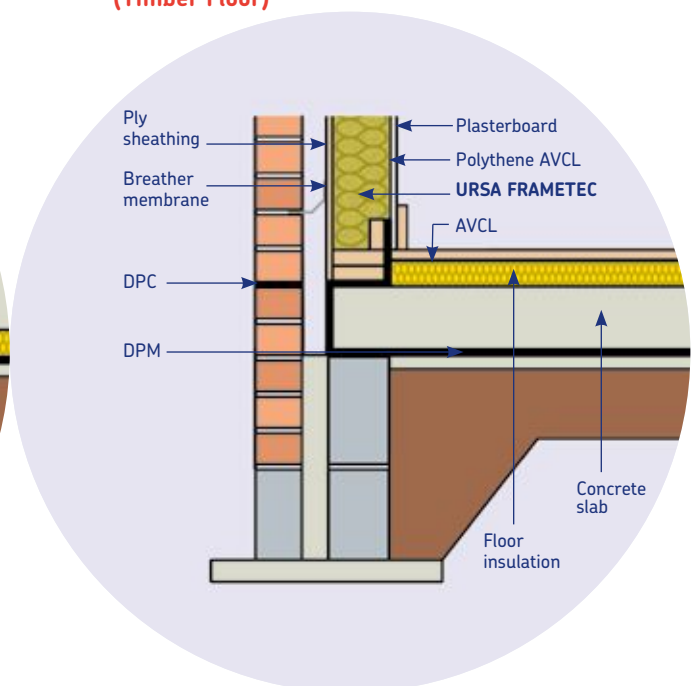


Figure 6 – Wall/Floor Junction Insulation Above Slab (Screed)

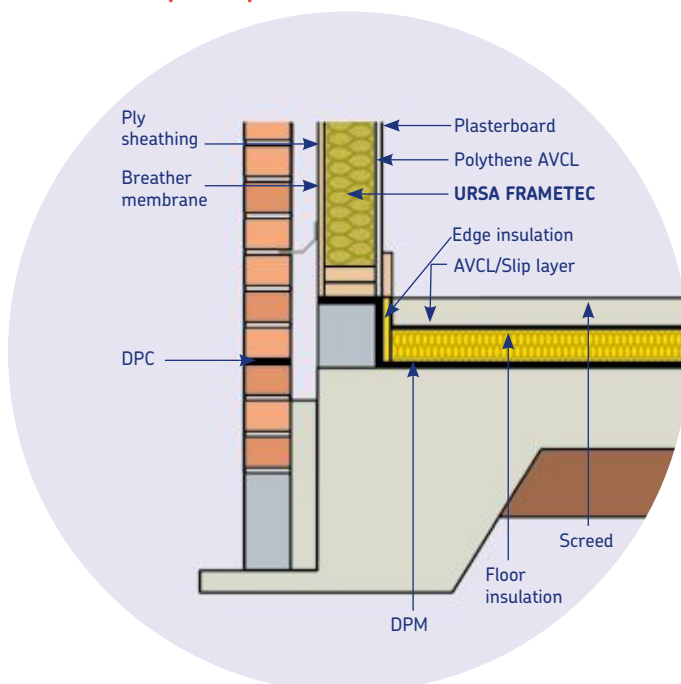
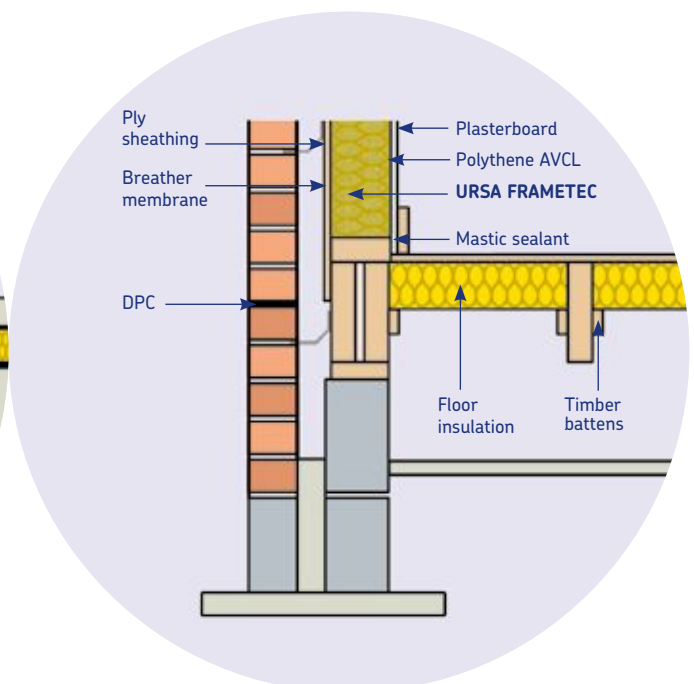


Figure 7 – Wall/Floor Junction (Timber Floor)



Design

Around door and window openings careful detailing of the insulation along with the use of proprietary insulated cavity closers can help to reduce thermal bridging (See Figures 8 & 9).

In a cold roof construction the entire thickness of the loft insulation should extend over the head of the main wall panel to the sheathing board (see Figures 10 & 11).

Figure 8 – Sill Detail

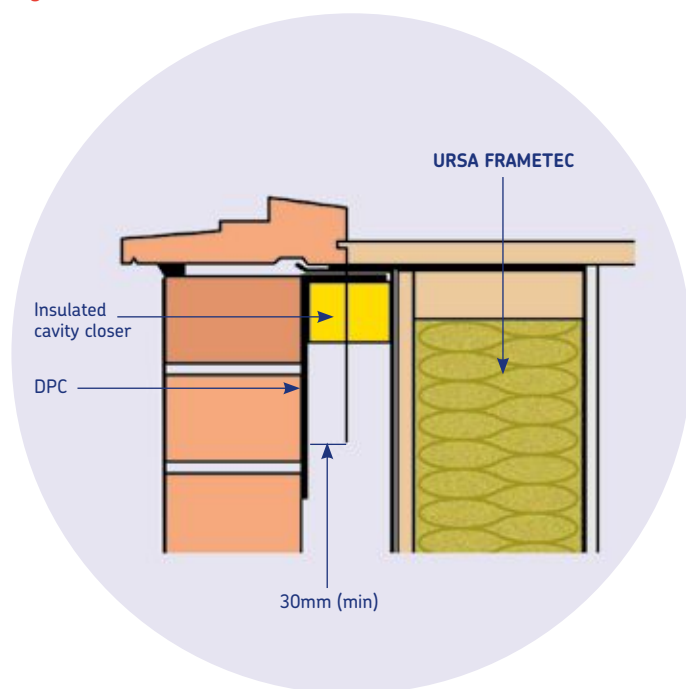


Figure 9 – Jamb Detail

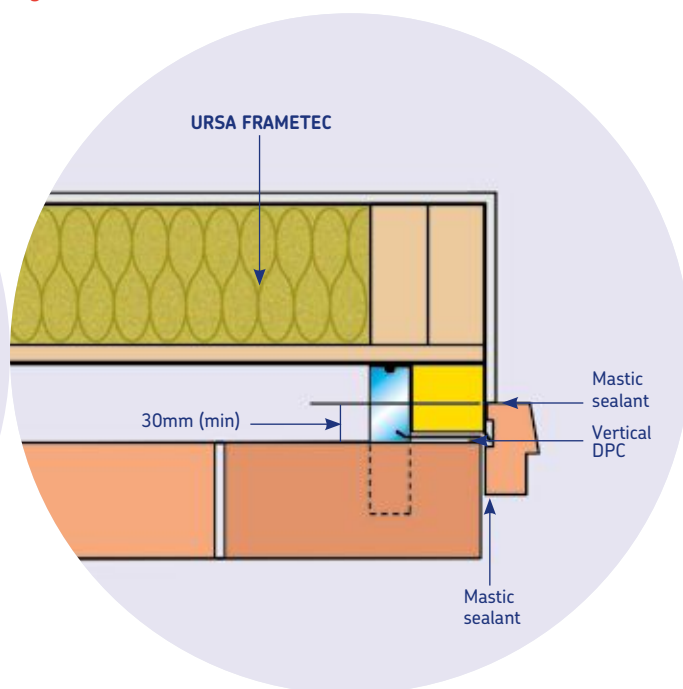


Figure 10 – Cold Pitched Roof – Gable Detail

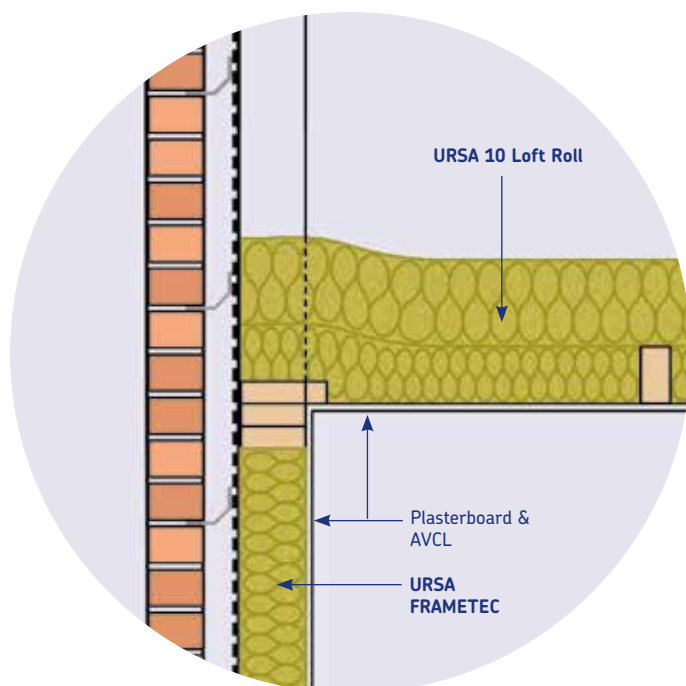
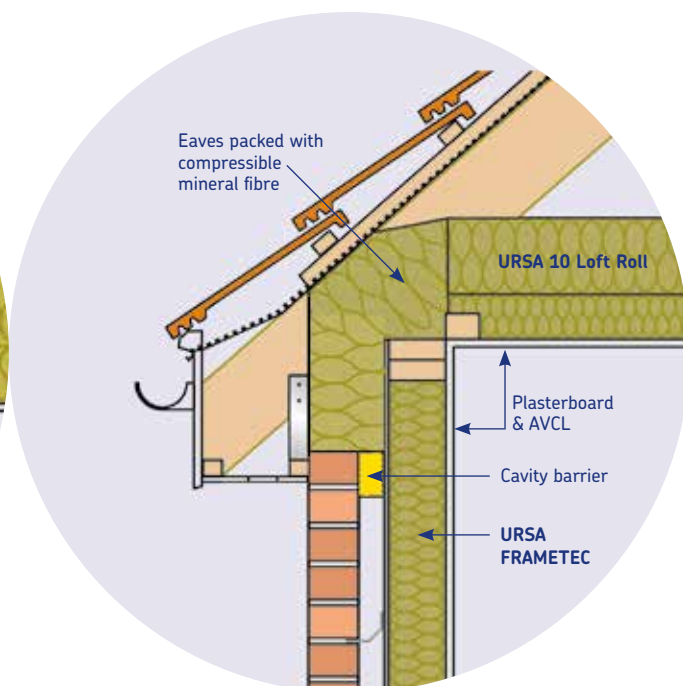


Figure 11 – Cold Pitched Roof – Eaves Detail



At gable walls with warm roof construction the insulation should be continued to the underside of the roof to ensure continuity of the wall and roof insulation (see Figures 12 & 13).

Fire Performance

When used within a timber or metal framed wall constructed in accordance with this brochure **URSA FRAMETEC** or **URSA HOMETEC ROLL** will not prejudice the fire resistance properties of the wall. Cavity barriers should be installed in accordance with Building Regulation requirements.

Figure 12 – Warm Pitched Roof – Gable Verge Detail

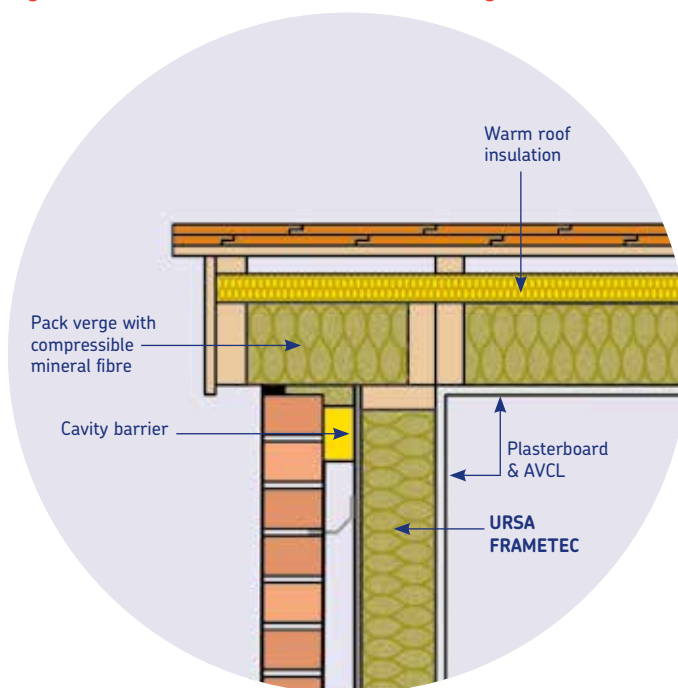
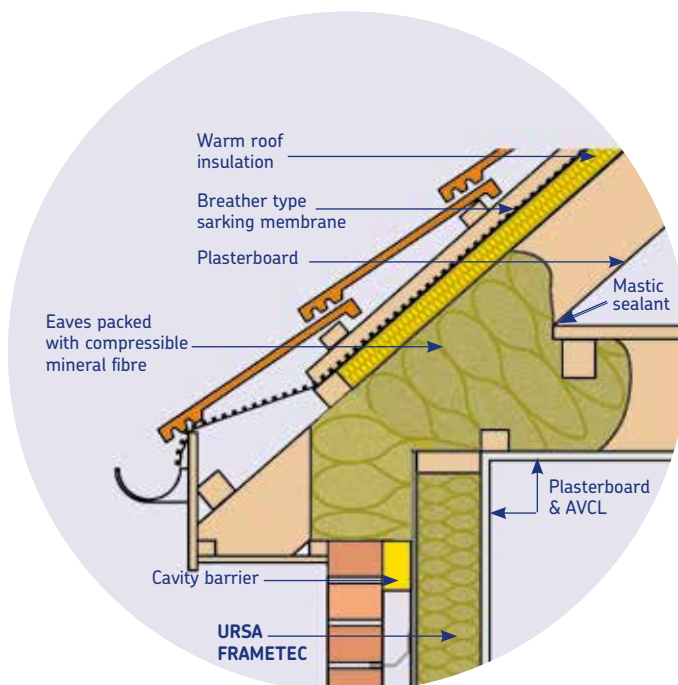


Figure 13 – Warm Pitched Roof – Eaves Detail



Installation

Insulation Between Timber Studs (see Figure 14)

The usual procedure for construction is:

1. The timber frame, OSB or plywood sheathing, breather membrane etc are all installed in the normal manner.
2. The external finish of brickwork, tile hanging or external render is then installed.
3. The **URSA FRAMETEC** is fitted tightly between the studs, normally fully filling the stud depth.
4. The internal lining of air and vapour control layer (AVCL) and plasterboard are then fixed in the normal manner.
5. An enhanced U-value may be achieved by installing additional insulation internally or externally to the timber frame. Check with the timber frame manufacturer for specific requirements and details.

Insulation Between Metal Studs (see Figure 15)

The usual procedure for construction is:

1. The metal framing is installed in accordance with the manufacturer's instructions.
2. The external finish of brickwork, tile hanging or external render is then installed.
3. Install the **URSA FRAMETEC SLAB 35** between the studs ensuring the slabs are tightly jointed and there are no gaps. Alternatively use **URSA HOMETEC ROLL** cut to width to suit the stud centres, normally 600mm, and fit tightly between the studs.
4. The internal lining of air and vapour control layer (AVCL) and plasterboard are then fixed in the normal manner.
5. An enhanced U-value may be achieved by installing additional, partial fill, cavity wall insulation external to the steel frame. Check with the steel frame manufacturer for specific requirements and details.

Other forms of external finish such as tile hanging, render, timber weatherboarding, PVC-U cladding etc are also suitable and should be fixed in accordance with the manufacturer's instructions.

Figure 14 – Insulation Between Timber Studs

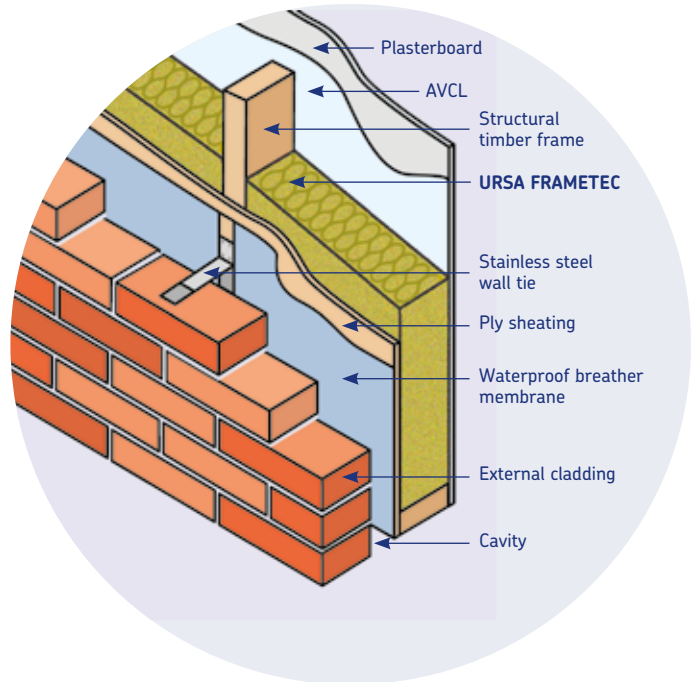
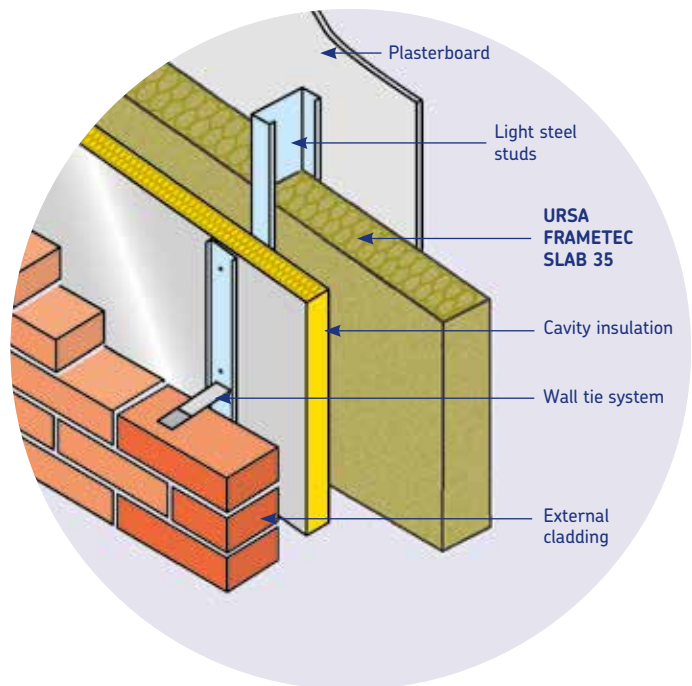


Figure 15 – Insulated Metal Frame



Heat Loss Calculations

The normal method of calculating U-values in floors, walls and roofs is the Combined Method (see BS EN ISO 6946) which as well as assessing the thermal bridge effect of mortar joints, timber studs etc also accounts for air gaps in the insulation and mechanical fasteners penetrating the insulation.

Compliance with the Building Regulations is shown by limiting the overall CO₂ emissions from the building – this gives considerable design flexibility but there are no specific U-values, except the worst allowable, that must be achieved.

In dwellings U-value of 0.18 W/m²K – 0.20 W/m²K or better will help ensure Building Regulation compliance. In non-dwellings aim for 0.22 W/m²K or better.

Typical Construction – Between Timber Studs;

103mm brick
50mm clear cavity
Breather membrane
9mm OSB sheathing

URSA FRAMETEC or **URSA FRAMETEC SLAB** (Timber frame proportion of 15%)
(30mm PUR)
Air & vapour control layer
12.5mm Plasterboard

URSA FRAMETEC 35 (mm)	U-Value (W/m ² K) (Standard breather membrane)	U-Value (W/m ² K) (Reflective breather membrane)
90	0.38	0.32
140	0.27	0.24
140mm & 30mm PUR	0.20	0.18

URSA FRAMETEC 32/FRAMETEC SLAB 32 (mm)	U-Value (W/m ² K) (Standard breather membrane)	U-Value (W/m ² K) (Reflective breather membrane)
90	0.37	0.31
140	0.26	0.23
140mm & 30mm PUR	0.19	0.17

Typical Construction – Between Metal Studs;

103mm brick
50mm clear cavity
50mm PUR cavity insulation
URSA FRAMETEC SLAB 35
Air & vapour control layer
2 x 12.5mm Plasterboard

Steel studs at 600mm c/c. Correction for restraint channel fixings based on fixings with cross sections area of 24 mm², thermal conductivity 17 W/mK and at 4.9 fixings/m².

URSA FRAMETEC SLAB 35	U-Value (W/m ² K)
100mm & 50mm PUR	0.20
150mm & 50mm PUR	0.18
200mm & 50mm PUR	0.16

Technical Details

Specification Clause

The stud wall insulation shall be mm thick

URSA FRAMETEC/FRAMETEC SLAB 35 unfaced mineral wool roll/slab. Insulation to be installed as work proceeds in accordance with URSA UK Ltd instructions.

Thermal Conductivity

Declared thermal conductivity of **URSA FRAMETEC 35** and **URSA FRAMETEC SLAB 35** is 0.035 W/mK.

Declared thermal conductivity of **URSA FRAMETEC 32** and **URSA FRAMETEC SLAB 32** is 0.032 W/mK.

Declared thermal conductivity of **URSA HOMETEC ROLL 35** is 0.035 W/mK.

Declared thermal conductivity tested to BS EN 13162.

Density

Nominal density of **URSA FRAMETEC 35** is 22 kg/m³.

Nominal density of **URSA FRAMETEC SLAB 35** is 22 kg/m³.

Nominal density of **URSA FRAMETEC 32** is 32 kg/m³.

Nominal density of **URSA FRAMETEC SLAB 32** is 32 kg/m³.

Nominal density of **URSA HOMETEC ROLL 35** is 22 kg/m³.

Reaction to Fire

Euroclass A1 to BS EN 13501-1.

Moisture Vapour Transmission

URSA FRAMETEC/FRAMETEC SLAB and **URSA HOMETEC ROLL** have minimal resistance to the passage of water vapour thus allowing the wall to breathe.

A practical value for the moisture vapour resistivity is 5 MNs/gm.

Specific Heat Capacity

The specific heat capacity is 1.0 kJ/kgK.

Environmental Information

BRE Green Guide

All URSA mineral wool products achieve the best possible 'A+' rating under the BRE Green Guide.

Manufactured to BS EN ISO 14001.



URSA FRAMETEC

Dimensions	
Thickness (mm)	Width (mm)
90 & 140	2 x 580

URSA FRAMETEC SLAB 32

Dimensions		
Thickness (mm)	Length (mm)	Width (mm)
90 & 140	1200	570

URSA FRAMETEC SLAB 35

Dimensions		
Thickness (mm)	Length (mm)	Width (mm)
90, 100, 120 & 150	1350	600

URSA HOMETEC ROLL 35

Dimensions	
Thickness (mm)	Width (mm)
60, 80, 100, 120, 140, 150, 160, 180, 200, 220, 240 & 260	1200

Durability

When correctly installed, URSA mineral wool products are maintenance free and have an indefinite life at least equal to that of the building.

Storage

URSA mineral wool products are supplied wrapped in polythene to provide short-term protection. On site they should be stored clear of the ground, on a clean level surface and preferably under cover to protect them from prolonged exposure to moisture or mechanical damage.

Chemical Compatibility

URSA mineral wool products are compatible with all common construction materials, alkalis, dilute acids, mineral oil and petrol. Products that have been in contact with harsh solvents, acids or saturated with water should not be used.

Health and Safety

URSA mineral wool products are inherently safe to handle. During cutting or handling any dust generated is of nuisance value only; the wearing of dust masks, gloves and long sleeved clothing is recommended. Large scale machining should be connected to a dust extraction system.

A comprehensive Health and Safety data sheet is available from URSA UK Ltd upon request.

Availability

URSA mineral wool products are available nationally through insulation distributors and builders' merchants.

References

The Building Regulations and supporting documents.

NHBC Standards (NHBC).

CIBSE Guide A3 - Thermal Properties of Buildings and Components.

Timber Frame Construction (TRADA).

BS 5250 Management of Moisture in Buildings – Code of Practice.

BS EN 1995, Eurocode 5. Design of Timber Structures.

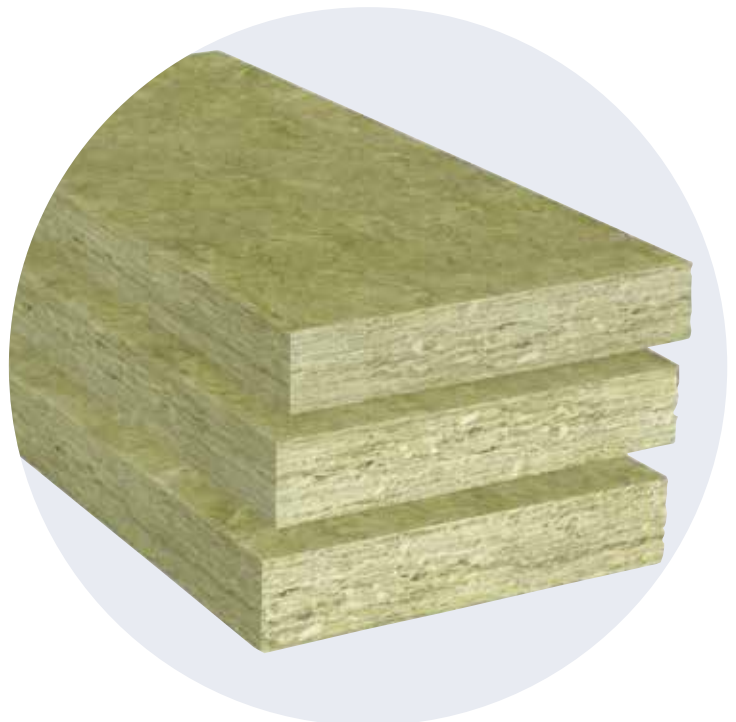
BS EN 845 Specification for Ancillary Components for Masonry. Ties, Tension Straps, Hangers & Brackets.

BRE Special Digest SD2 Timber frame dwellings: U-values and the Building Regulations.

BRE Special Digest SD6 Timber frame dwellings: Section 6 of the Domestic Technical Handbook (Scotland): Energy.

BRE Digest 465 U-values for light steel-frame construction.

BRE Digests, Information Papers and Good Building Guides.





Etex UK Insulation Limited
Thistle Industrial Estate
Kerse Road
STIRLING
FK7 7QQ
United Kingdom

T 01786 451170
E customerservice.stirling@etexgroup.com

Technical enquiries
E technicalursa.uk@etexgroup.com

www.ursa-uk.co.uk

 [/showcase/ursa-uk-ireland](#)

 [/ursainsulation](#)