

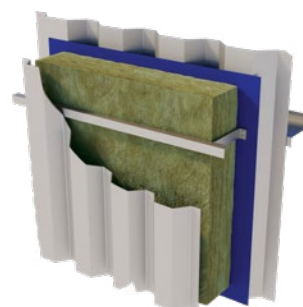
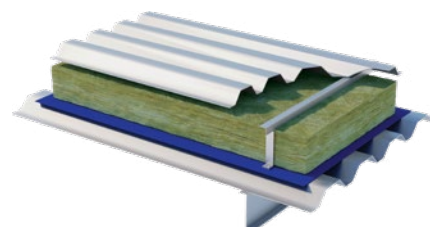


URSA HOMETEC ROLL 40



Typical applications:

Twin skin profiled metal clad systems.



Description.

URSA HOMETEC ROLL 40 is a non-combustible glass mineral wool insulation roll. The roll is supplied 1200mm wide.



Non-combustible



Thermal Insulation



Recycled Glass Content

Application.

URSA HOMETEC ROLL 40 is designed to provide thermal and acoustic insulation in the walls and roofs of twin skin profiled metal clad systems and portable & modular buildings.

Performance.

Thermal Conductivity:

Declared thermal conductivity (λ) value of 0.040 W/mK.

Density:

Manufactured at a nominal density of 12 kg/m³.

Fire Classification:

Deemed non-combustible with a fire classification of Euroclass A1 (the highest possible rating) when tested to EN 13501-1:2018 Reaction to Fire.

Technical Characteristics.

Product Specification.

Thickness (mm)	Length (mm)	Width (mm)	Pack Area (m²)	Packs per pallet	Pallet Area (m²)	Thermal Conductivity (W/mK)	Thermal Resistance (m²K/W)	Product Code
60	13500	1200	16.20	24	388.80	0.040	1.50	2137715
80	10500	1200	12.60	24	302.40	0.040	2.00	2137716
90	9000	1200	10.80	24	259.20	0.040	2.25	2126893
100	8500	1200	10.20	24	244.80	0.040	2.50	2137717
120	7500	1200	9.00	24	216.00	0.040	3.00	2137718
140	6500	1200	7.80	24	187.20	0.040	3.50	2137713
160	5500	1200	6.60	24	158.40	0.040	4.00	2137714
180	5000	1200	6.00	24	144.00	0.040	4.50	2075406
200	4500	1200	5.40	24	129.60	0.040	5.00	2137719
220	4000	1200	4.80	24	115.20	0.040	5.50	2138527
240	3750	1200	4.50	24	108.00	0.040	6.00	2137781
260	3500	1200	4.20	24	100.80	0.040	6.50	2138528
280	2800	1200	3.36	24	80.64	0.040	7.00	2140802

Please note that all dimensions are nominal.

Additional Information.

Vapour Resistivity.

The product has a nominal vapour resistivity of 5 MNs/gm.

Environmental Credentials.

- The primary packaging on our products (rolls and slabs) and pallets (the shrink hood) are wrapped in low-density polyethylene (LDPE4) plastic, which contains a minimum 30% recycled material and is fully recyclable. The secondary packaging on our products (grouping rolls and slabs into modules of 3-6 packs) is low-density polyethylene (LDPE4) virgin plastic. Before recycling, please consult your local authority for guidance.
- ISO 14001:2015 – Environmental Management Systems (EMS) certified. Certificate number: BQA_EMS_C_2016673.
- Contains no ozone-depleting substances or greenhouse gases.
- Manufactured from up to 73% recycled glass.
- Generic BRE Green Guide Rating of A+.

Standards and Approvals.

Manufactured in accordance with:

- EN 13162:2012+A1:2015 Thermal insulation products for buildings – Factory made mineral wool (MW) products.
- EN 13172: 2012 Thermal insulation products – Evaluation of conformity.
- ISO 9001:2015 – Quality Management Systems (QMS). Certificate number: Q1 100 1300949.

Certification.

- CE marked to EN 13162:2012+A1:2015. Certificate number: 1163-CPR-0051.

EUCEB (European Certification Board of Mineral Wool Products).

All URSA glass mineral wool products are made of non-classified fibres and are certified by EUCEB. EUCEB is a voluntary initiative by the mineral wool industry. It is an independent certification authority that guarantees that products are made of fibres which comply with the exoneration criteria for carcinogenicity (Note Q) of the Regulation (EC) 1272/2008. Certificate number: BEUC-511-46-376-46.

Handling & Storage.

The product should be stored properly and handled in such a way as to ensure that the product remains clean and undamaged.

The product is supplied compression packed in polythene to provide short term protection only. For long term protection, the product must be stored indoors, or under a waterproof covering and off the ground to protect from weather damage. The product should not be left permanently exposed to the elements.

All URSA products are non-hygroscopic, will not rot, degrade, or sustain vermin and will not encourage the growth of mould, bacteria, or fungi.

URSA TERRA.

Developed in 2009, URSA TERRA is the latest in glass mineral wool technology. A combination of our unique production processes and product formulation delivers significant advancements across our expansive range of insulation products.



Etex UK Insulation Limited. Thistle Industrial Estate, Kerse Road, Stirling, Scotland FK7 7QQ ursa-uk.co.uk

Technical: T. 0808 1645 134 | E. technicalursa.uk@etexgroup.com | Customer Services: T. 01786 451170 | E. customerservice.stirling@etexgroup.com